

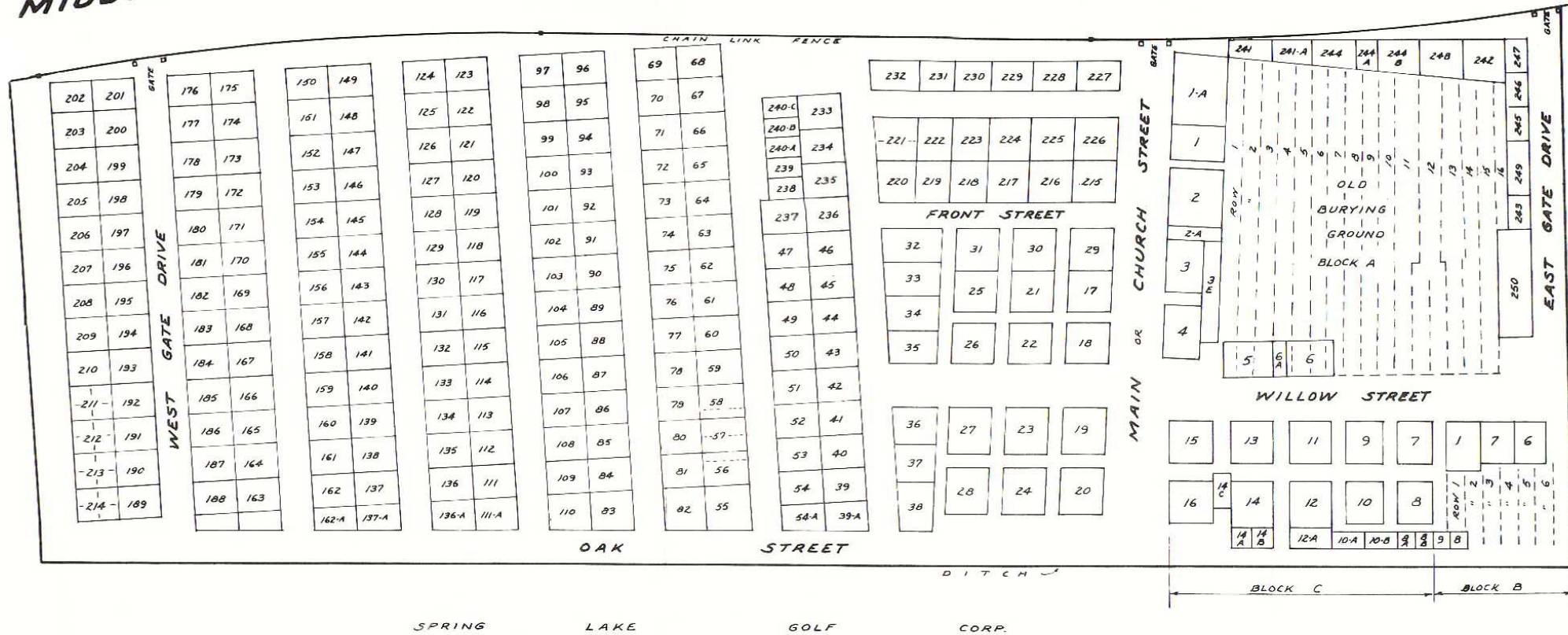


UNION CEMETERY AT MIDDLE ISLAND

NOTE: LOTS 1-214 (EXCEPT IN BLOCK B) ARE SHOWN ON MAP NO. 294 FILED IN SUFFOLK COUNTY CLERK'S OFFICE APR. 26, 1869 AND AMENDED MAP FILED OCT. 4, 1876.



MIDDLE COUNTRY ROAD



SPRING LAKE GOLF CORP.